

GEIST

Instruction Manual
Automated Smart Updater
For R-Series and EM Devices

Software Version 1.9

Contents

Specifications and Requirements	3
Overview	3
Supported Hardware	3
Requirements	3
Usage	4
Installation	4
Startup	5
Entering IP addresses	5
Saving IP Address Lists	12
Adding/Modifying Credentials	12
Updating Devices	16
Technical Support	19
Firmware Updates	19
More Technical Support	19
Table of Figures	20
Revision History	21

Specifications and Requirements

Overview

The Geist Automated Smart Updater (ASU) is a software tool for simultaneously updating multiple Geist IP-enabled devices.

Supported Hardware

The Geist ASU supports the following devices:

- R-Series (formerly RacSense®) devices (Firmware versions 2 and 3)
- Current Monitoring (EM) Meter devices (Firmware versions 1 and 2)
- BB-Series devices

Notes:

- R-Series devices with Firmware version 2 **are not** upgradable to Firmware version 3.
- Current Monitoring (EM) devices with Firmware version 1 **are** upgradable to Firmware version 2.

Requirements

Computer

The Geist ASU requires a computer with the following software installed:

- Microsoft Windows XP with Service Pack 3 or newer
- Microsoft .NET Framework 3.5 with Service Pack 1

Network

The following network services will need to be open (not firewalled or disabled) on each device being upgraded

- HTTP
- ICMP
- FTP (R-Series v2 and EM v1 only)
- TFTP (EM v1 and v2)

Usage

Installation

The ASU requires no installation. Simply unzip the application into a directory that is easy to find (the desktop or C:\ are good locations). Once the ASU is unzipped, drop any firmware files you wish to use into the same directory as the application.

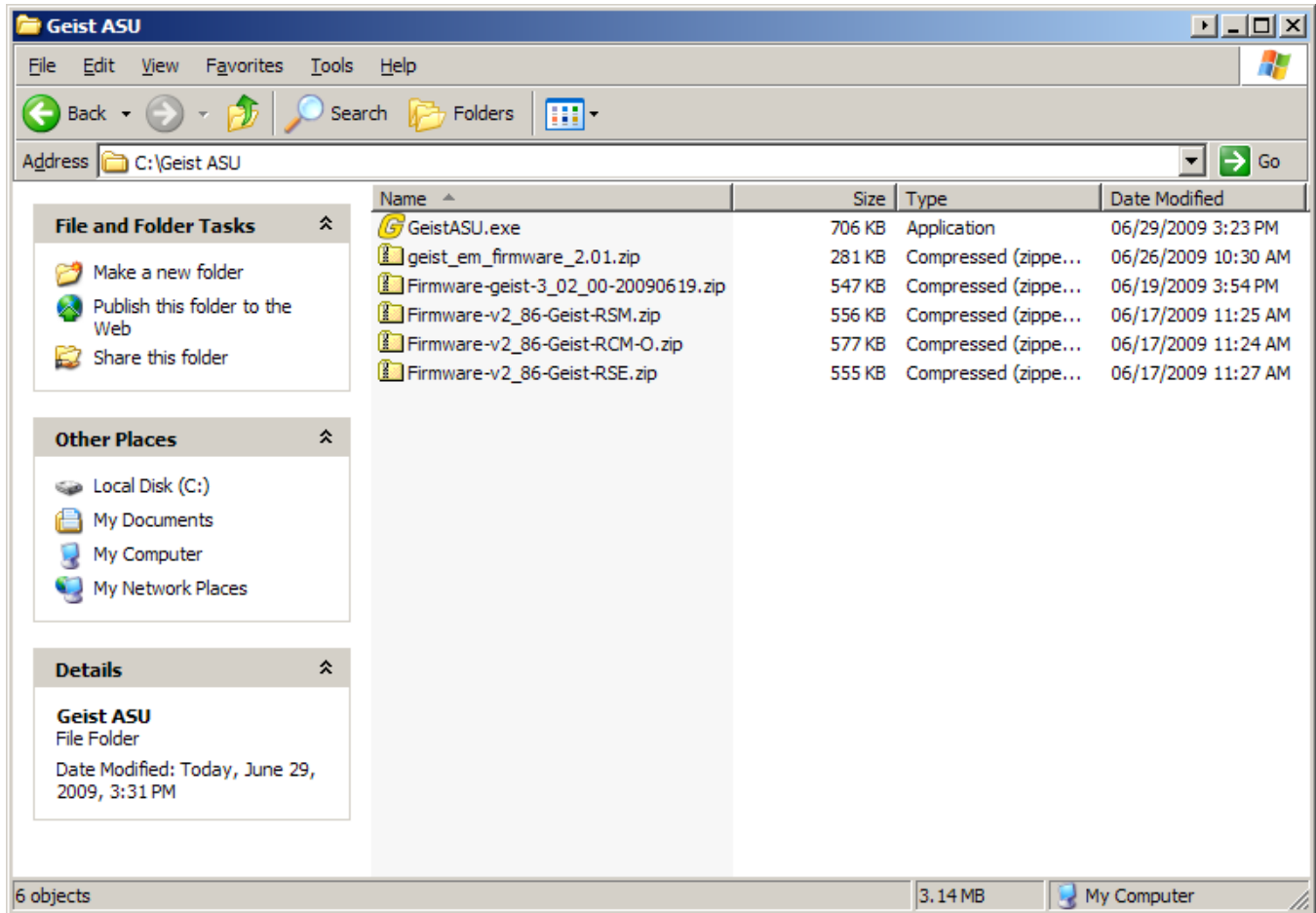


Figure 1: ASU with multiple firmware packages

Startup

On startup, the ASU will search for firmware in the application directory.

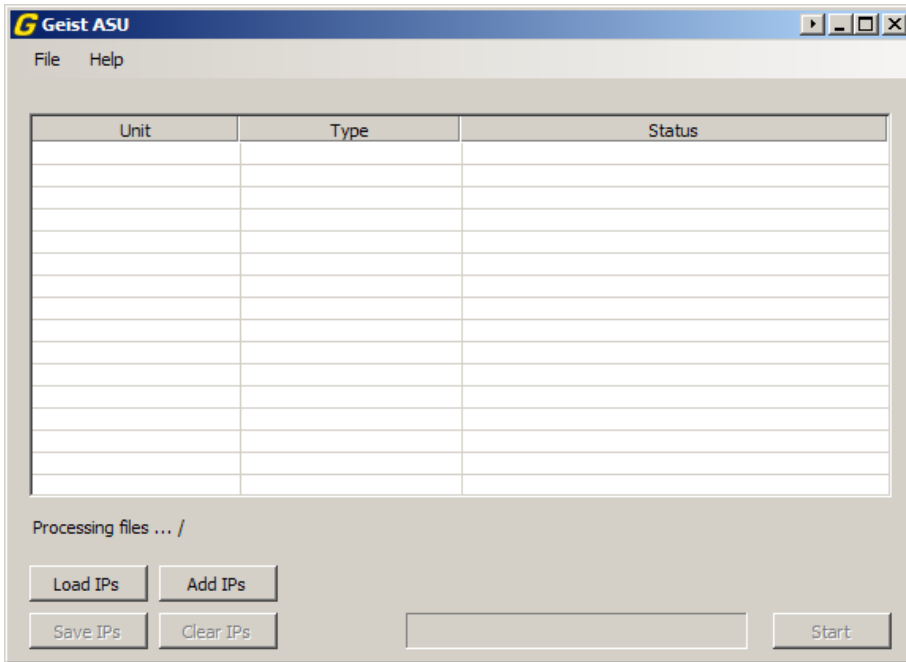


Figure 2: Processing firmware packages

Entering IP addresses

Once firmware processing is complete, the ASU is ready to accept the IP addresses of units needing upgrades. There are five ways to enter IP addresses:

(1) Load Text Files

The ASU can read IP addresses from plain text files. The files should have one IP address per line. Click "Load IPs" to load IPs from a text file.

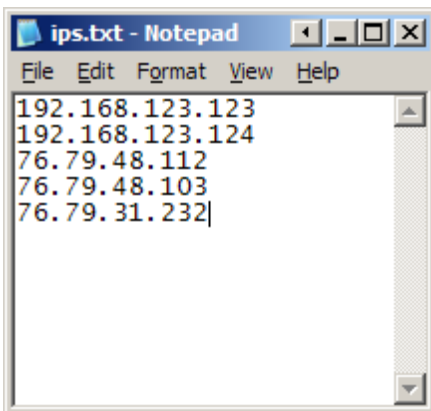


Figure 3: IP address text file

The ASU can also read a custom format that includes usernames and passwords for those units that have them. This is the format that the ASU uses when saving IP address lists. See Saving IP Address Lists (page 12).

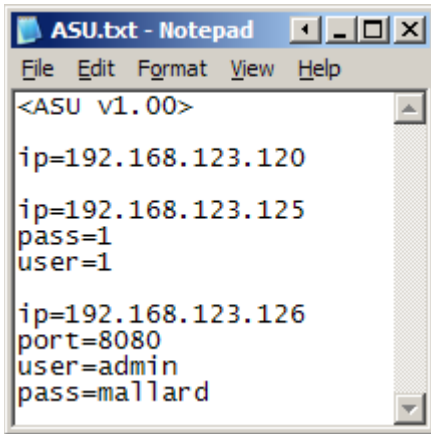


Figure 4: ASU IP address file

Click “Load IPs” to select text files to read IP addresses from. Multiple files may be selected.

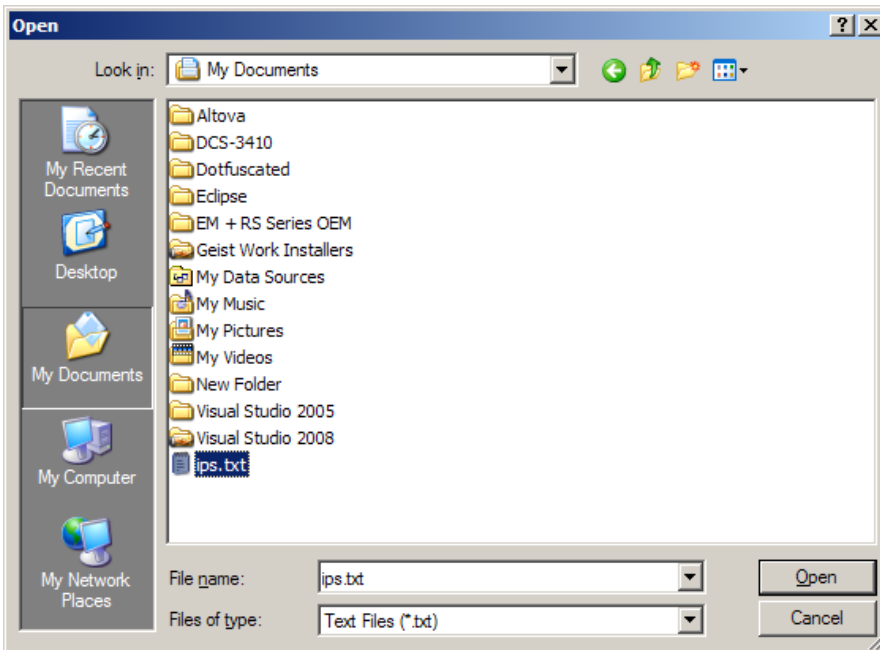


Figure 5: Selecting an IP address list file

The ASU will load the IP addresses out of each selected file and add them to the list of units to update.

(4) Range Entry

IP addresses can also be added as ranges. Click “Add IPs” in the main window to open the IP Entry window. Select “Add a range of IP addresses” to switch to Range Entry mode. Credentials and alternate HTTP port, for units that need them, can be entered here.

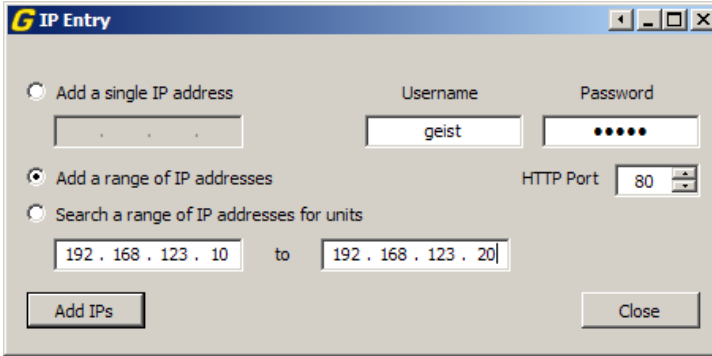


Figure 9: IP Entry window in Range Entry mode

Click “Add IPs” to add all of the IP addresses in the range entered to the list of units to update.

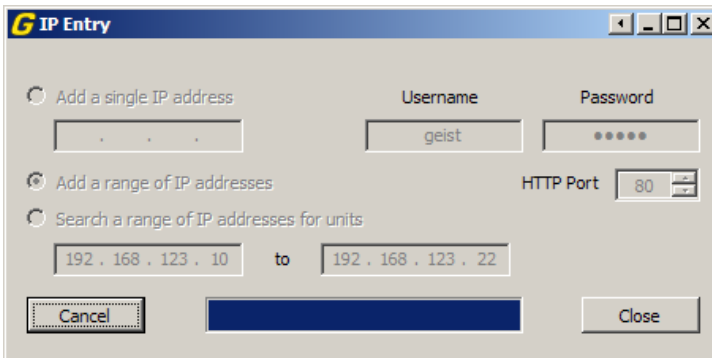


Figure 10: Processing an IP address range

When processing is complete, a message will appear indicating how many IP addresses were added. Duplicate entries will not be added.

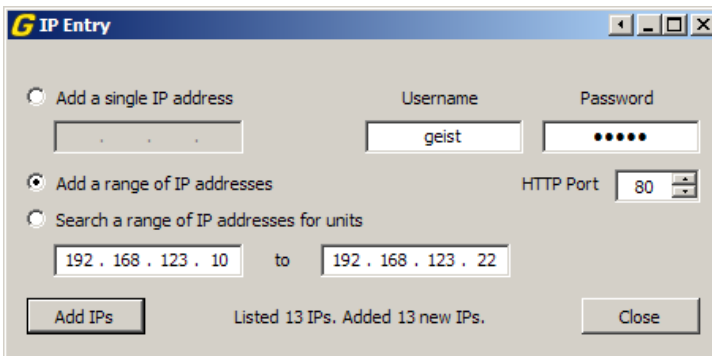


Figure 11: Finished processing an IP range

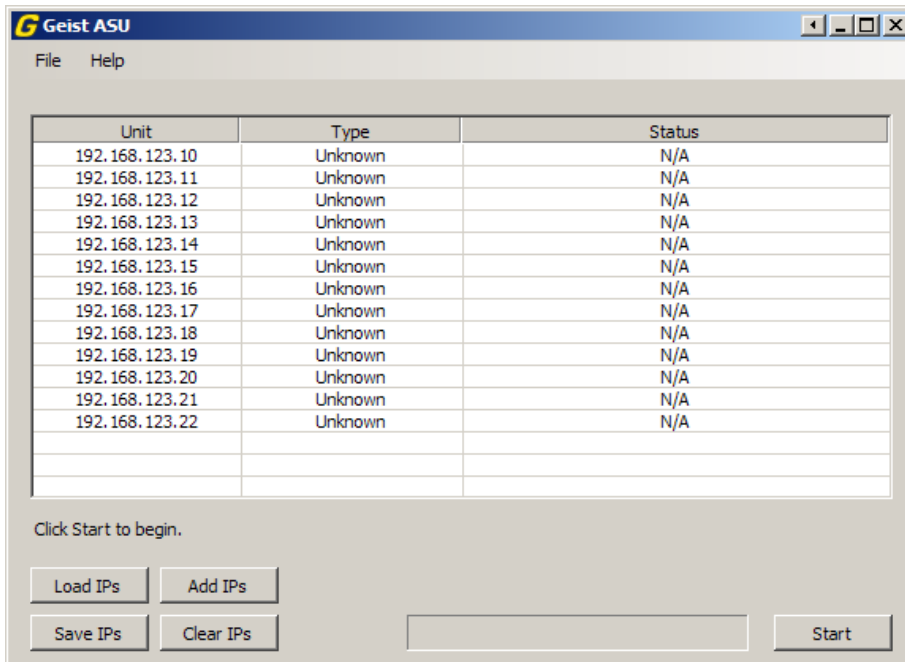


Figure 12: Main window with a range of IP addresses to update

(5) Range Search

The ASU can search a range of IP addresses for active devices. This is useful when creating lists of devices that will be saved later.

Note: Any device in the range being searched that responds to an ICMP ping will be added to the list of units to update. The updater will ignore non-Geist devices during the update process.

Click "Add IPs" in the main window to open the IP Entry window. Select "Search a range of IP addresses for units" to switch to Range Search mode. Credentials and alternate HTTP port, for units that need them, can be entered here.

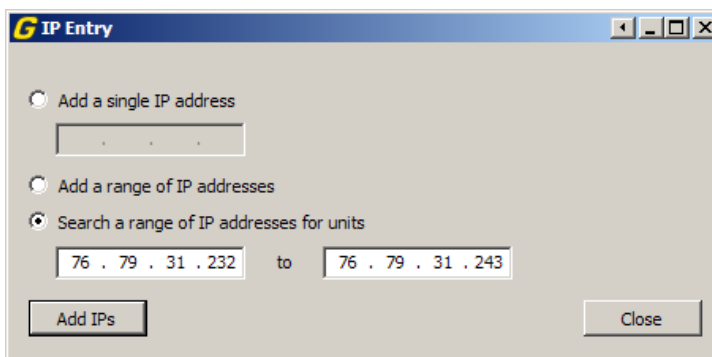


Figure 13: IP Entry window in Range Search mode

Click "Add IPs" to search all of the IP addresses in the range entered for active devices.

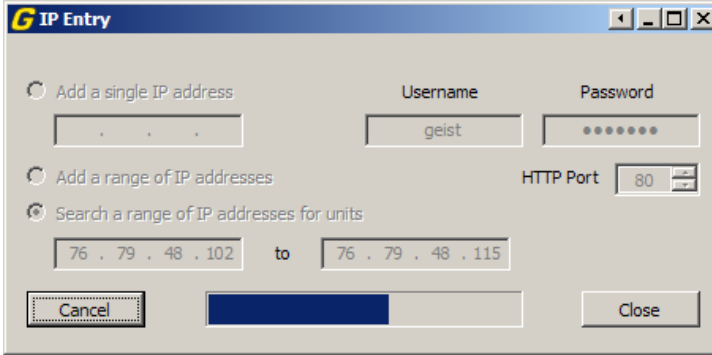


Figure 14: Searching an IP range

When processing is complete, a message will appear indicating how many units were found and added to the list of units to update. Duplicate entries and non-responsive addresses will not be added.

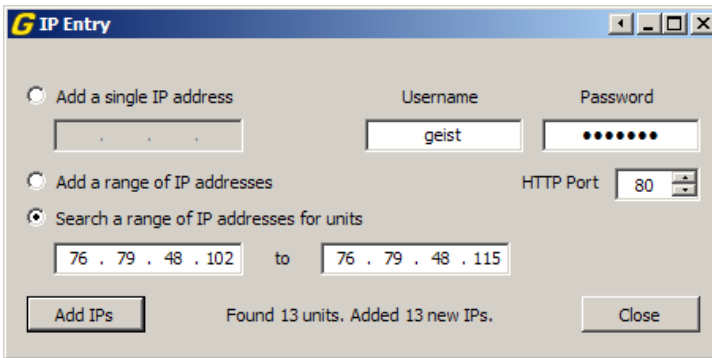


Figure 15: Finished searching an IP range

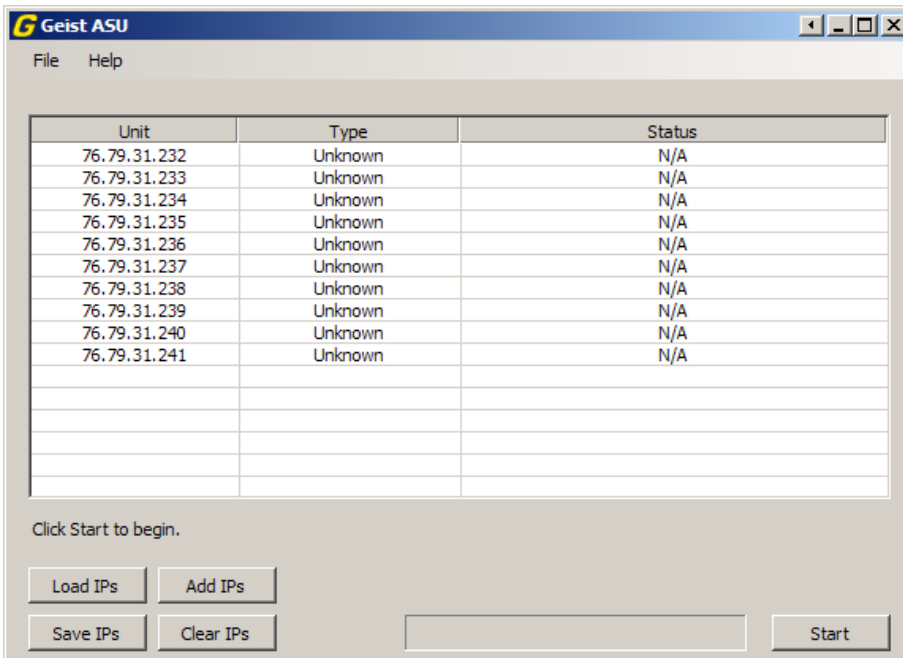


Figure 16: Main window with a range of IP addresses to update

Saving IP Address Lists

Once a list of IP addresses has been entered into the ASU, it can be saved to a text file by clicking "Save IPs." This is useful for generating lists of IPs for use in future updates.

Adding/Modifying Credentials

Depending on their configuration, some units may require credentials to perform a firmware update. Credentials can be entered via IP address files or the IP Entry window (see Entering IP addresses, page 5). Alternatively, credentials can be added, changed or removed by right clicking on one or more IP addresses in the Geist ASU's main window and selecting "Add/Change Credentials" from the context menu.

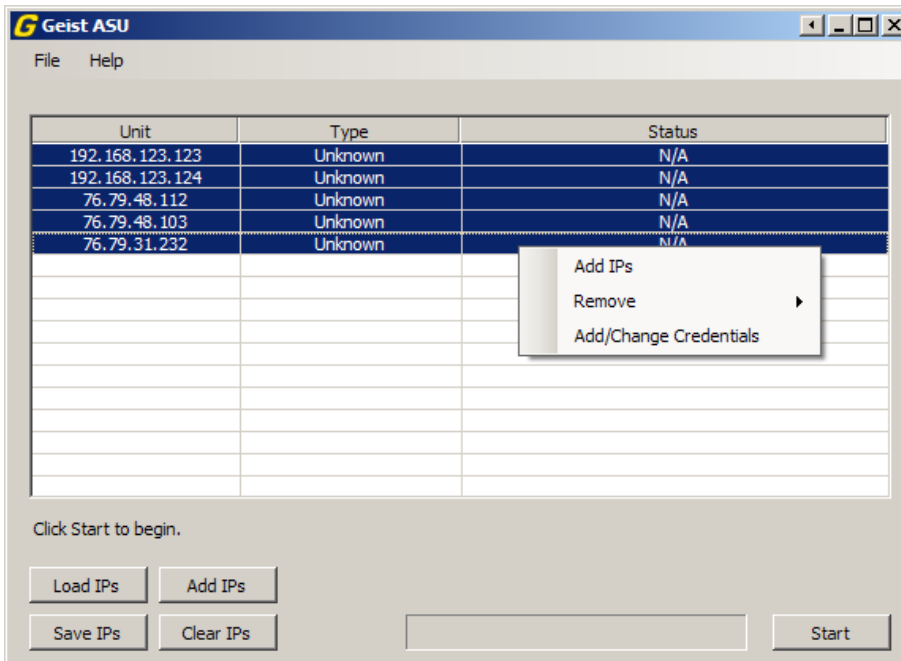


Figure 17: Main window context menu

Credentials are not applied to a unit until the "Merge" button is pressed. A confirmation box will appear. Clicking "OK" will update the credentials count in the Units list for all selected units.

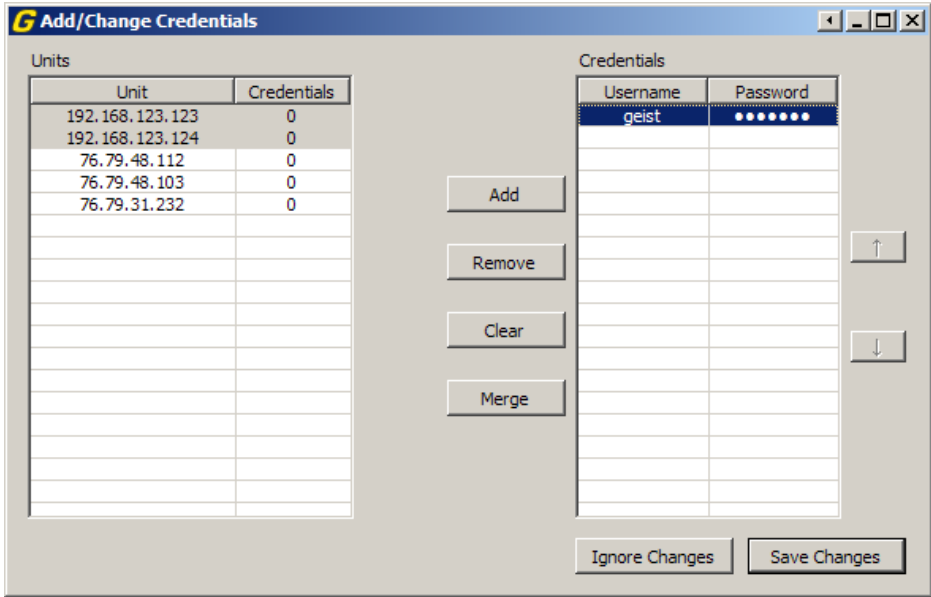


Figure 20: A unit with unmerged credentials

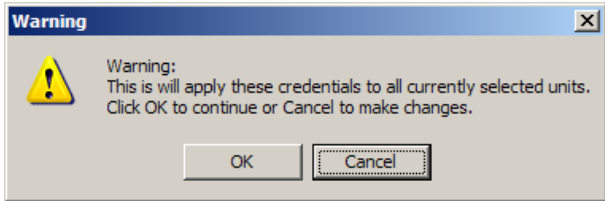


Figure 21: Credentials merge confirmation

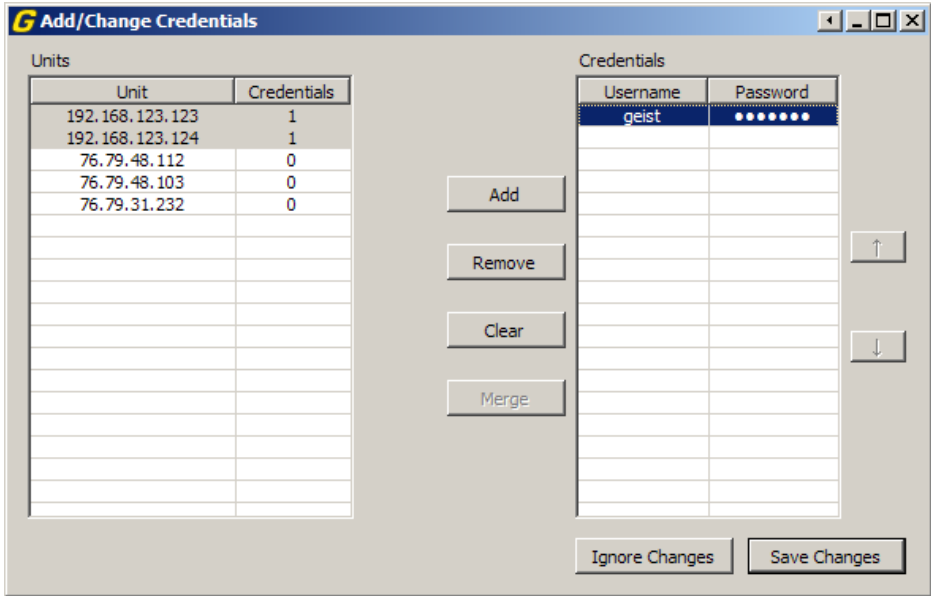


Figure 22: Merged credentials

If a unit is unselected and there are unmerged changes a warning box will appear. Click "OK" to ignore the changes or "Cancel" to ignore the selection change.

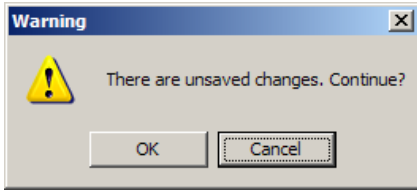


Figure 23: Unmerged changes warning

Once all credentials changes have been made, click "Save Changes" to apply them permanently. Clicking "Ignore Changes" will close the Add/Change Credentials window without making any changes.

If there are any unmerged changes, a warning box will appear. Click "OK" to ignore the changes or "Cancel" to ignore the changes.

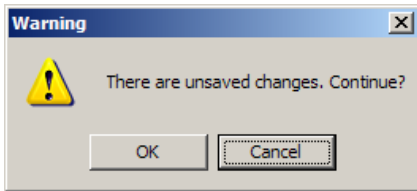


Figure 24: Unmerged changes before saving warning

If any units have multiple credentials a warning box will appear. Click "Yes" to keep the Add/Change Credentials window open or "No" to close it. If multiple credentials are present the ASU will use them in the order they are listed in this window.

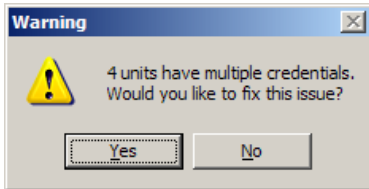


Figure 25: Multiple credentials warning

Updating Devices

Once a list of units to update has been entered and firmware is loaded, click "Start" to begin the update process. The ASU will contact each unit via HTTP to determine what firmware is currently installed and will choose the most current available firmware (if any) to load into the device.

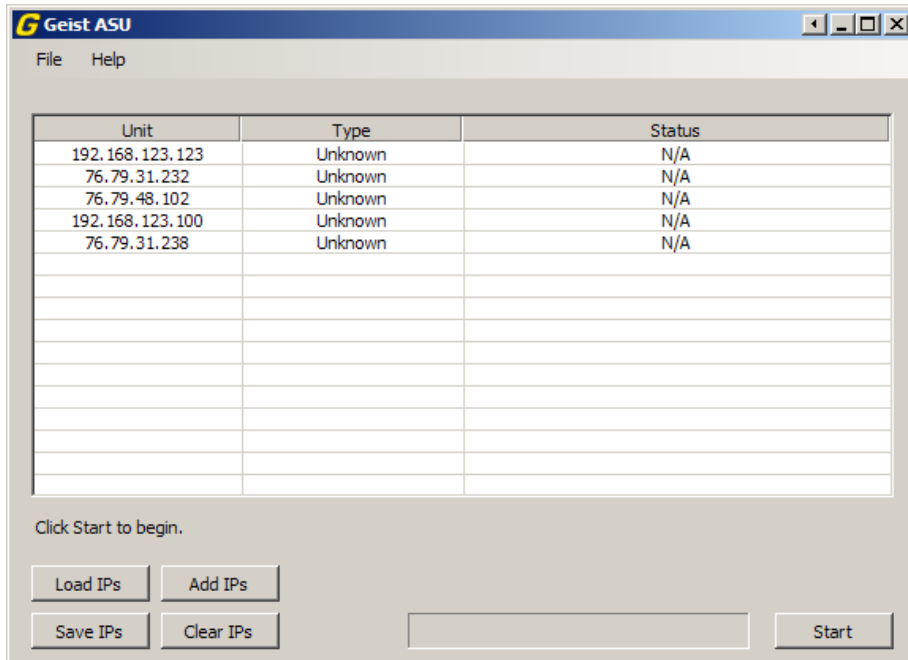


Figure 26: Units waiting to be updated

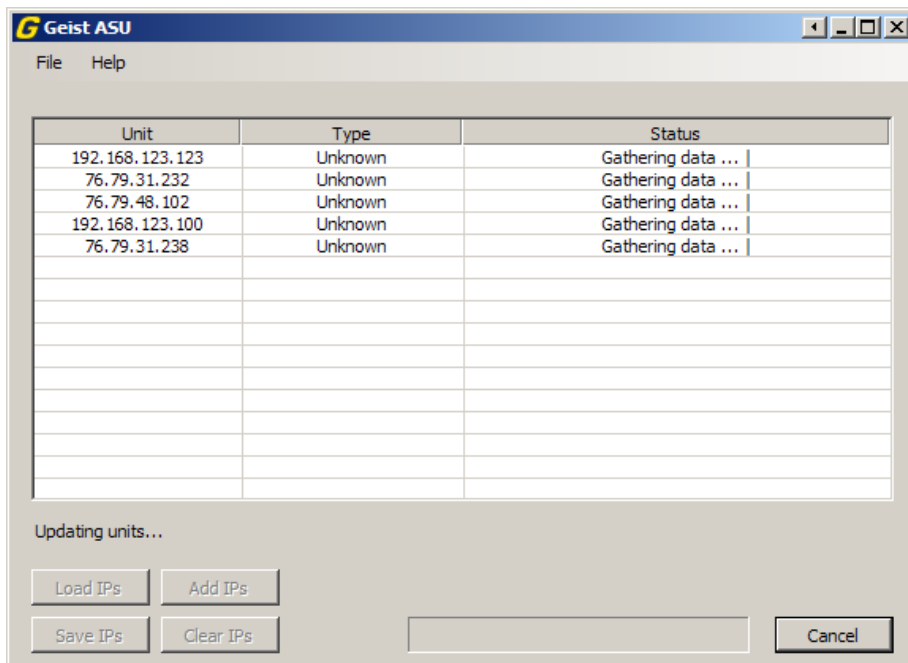


Figure 27: Gathering unit data before update

Technical Support

Firmware Updates

Keep your unit updated with the latest firmware releases or sign up for notifications.
<http://www.geistmfg.com/GeistUS/Docs/downloads.htm>.

More Technical Support

<http://www.geistmfg.com>

(800) 432-3219

Email: support@geistmfg.com

Or contact your distributor.

Table of Figures

Figure 1: ASU with multiple firmwares	4
Figure 2: Processing firmware packages.....	5
Figure 3: IP address text file.....	5
Figure 4: ASU IP address file	6
Figure 5: Selecting an IP address list file.....	6
Figure 6: IP addresses loaded from text file.....	7
Figure 7: IP Entry window in Single Entry mode.....	8
Figure 8: Main window with a single IP address to update	8
Figure 9: IP Entry window in Range Entry mode.....	9
Figure 10: Processing an IP address range	9
Figure 11: Finished processing an IP range.....	9
Figure 12: Main window with a range of IP addresses to update	10
Figure 13: IP Entry window in Range Search mode.....	10
Figure 14: Searching an IP range	11
Figure 15: Finished searching an IP range	11
Figure 16: Main window with a range of IP addresses to update	11
Figure 17: Main window context menu	12
Figure 18: Add/Change Credentials window.....	13
Figure 19: Credentials entry window.....	13
Figure 20: A unit with unmerged credentials.....	14
Figure 21: Credentials merge confirmation	14
Figure 22: Merged credentials.....	14
Figure 23: Unmerged changes warning	15
Figure 24: Unmerged changes before saving warning	15
Figure 25: Multiple credentials warning	15
Figure 26: Units waiting to be updated	16
Figure 27: Gathering unit data before update	16
Figure 28: Update in progress.....	17
Figure 29: Gathering version data	17
Figure 30: Update complete	18

Revision History

Revision	Date	Notes	Approved By
1.0	7/1/2009	Initial Version	ADK, APK, BP, JP
1.1	5/25/2010	Updates for version 1.6	ADK, JP
1.2	11/3/2010	Updates for version 1.7	ADK
1.3	12/9/2010	Updates for version 1.8	ADK
1.4	10/18/2011	Changed .NET requirement and added BB100 support. Updates for version 1.9	ADK