

Console Management Software

- Basic & Metered
- Monitored
- Switched
- Satellite
- Environmental
- Software
- Accessories
- Brackets
- Educational
- Resources

“IT’S NOT EASY BEIN’ GREEN,”

Geist’s Console Software (CS-3) organizes power consumption and environmental data so you can easily analyze it and make informed decisions. As improvements are made to make your data center more efficient, the information can be qualified and presented to management as proof things are changing for the better.

CS-3 offers an inexpensive way to aggregate data from any of Geist’s intelligent power distribution products, including remote power monitoring, environmental monitoring, variable speed fan control and remote outlet control units. The ability to monitor and update hundreds of Geist web-enabled devices from a single IP address makes CS-3 an invaluable tool.

Each monitored device is displayed with a color-coded status bar for easy visual indication of alarm or normal readings, along with a webcam image associated with the corresponding unit (if available). Real-time measurement data for individual readings, such as temperature or real power, can be displayed in bar graph format, allowing a data-center-wide view of specific conditions. These same readings can be viewed as comparison graphs via an aggregate view, enabling instant identification of locations that are underperforming or affected during specific time periods. Trend analysis can also show data center hot spots or help in recreation of notable events. Each graphed variable provides click-through access back to the main unit for user convenience.

The CS-3 software also includes standard pages to help with configuration, alarm management, and logged data management, as well as a full help menu with detailed descriptions of each page and its functions.


EM40/GM22 EM8 PDU		demo-RSMv3 RacSense	
Amps Feed A	0.03	Temperature (F)	81.82
Amps Circuit 1	0.02	Relative Humidity	42
Amps Circuit 2	0.02	Light Level	93
Amps Feed B	0.02	Air Flow	1
Amps Circuit 3	0.02	Sound Level	0
Amps Circuit 4	0.02	IO-1	130
		IO-2	3
		IO-3	3
		Volts	115.5

HOME PAGE

Displays a thumbnail image (when provided by an associated webcam) for each user selected IP unit, along with the unit’s IP address, device name, and color coded unit status.

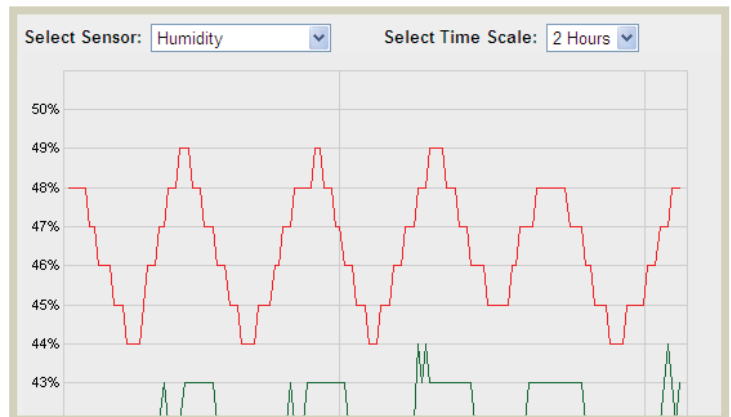
Sensor location: Any Sensor type: Circuit 1

None, All, Invert

[Sensor]	Current Value	Trip Type
 Amps Circuit 1 on EM8 PDU EM40/GM22	0.02 A	Trip
		Warn
Trip Type	Trip Limit	Notification
Warn		Enabled
Modify Alarm(s)		

ALARMS PAGE

Set low and high trip levels, in addition to alarm notification method, across multiple sensors and units in one easy step.



GRAPH PAGE

Comparison graphing of user selected measurement values across your installation. Instantly identify locations which are underperforming or are affected during specific time periods.

Console Management Software

Select Sensor:

Not Tripped Tripped

Sensor Name	0	Air Fl
Air Flow demo-RSE+RSS	<input type="text" value="1.8"/>	
Air Flow demo-RSMv3	<input type="text" value="2"/>	

STATUS PAGE

Real-time measurement data for a selected value across all connected devices. Color-coded readings to indicate sensor status: not tripped (green), almost tripped (yellow), tripped (red).

URL	Version	Last Contacted
demo-RCM-O <small>http://mcs-76-79-48-111.west.biz.nr.com:80</small>	3.2.4	07/09/2009 11:15:
demo-RSE+RSS <small>http://mcs-76-79-31-233.west.biz.nr.com:80</small>	2.86	07/09/2009 11:15:
demo-RSMv3 <small>http://mcs-76-79-48-102.west.biz.nr.com:80</small>	3.2.4	07/09/2009 11:15:
EM40/GM22 <small>http://mcs-76-79-31-246.west.biz.nr.com:80</small>	2.01	07/09/2009 11:15:

Add New Server

Server Name or IP Address:

Connection Type: HTTP HTTPS

Server Port:

SERVERS PAGE

Provides a complete list of attached units, including friendly names, IP addresses, software version, last update time and device status.

WebServer Settings

Listening Port HTTP: Valid Range [1, 65535]

Listening Port HTTPS: Valid Range [1, 65535]

Connection Type: HTTP only
 HTTPS only
 Both HTTP and HTTPS

Concurrent Connections: Valid Range [1, 16]

Connection Timeout: Valid Range [30, 300] (Seconds)

Password Protected: Yes
 No

Administrator Password:

CONFIGURATION PAGE

The CS-3 configuration page can be used to set up web connection parameters, as well as usernames, passwords, temperature display, firmware update, data storage and memory usage settings.

CONSOLE SOFTWARE 3

- Monitor multiple units on one easy to read web page
- Update firmware on multiple units simultaneously, Administrator can terminate batch firmware updates
- Graph readings from up to 20 units at one time for trending analysis
- Download Sensor and Event logs for all units at one time
- Limit access with three levels of password protection: Administrator - Access to all software functions
Control - Allows users to push alarm settings to units
View Only - Can view status but not make changes
- Support for HTTPS (encrypts data as it is transferred providing a higher level of security for sensitive data)
- Display temperature readings in Fahrenheit, Celsius or both
- Store username and passwords for webcams to effortlessly view images on cameras that require login
- Robust database application - Log data is stored and archived via Microsoft SQL and can be analyzed with SQL-capable tools

- Basic & Metered
- Monitored
- Switched
- Satellite
- Environmental
- Software
- Accessories
- Brackets
- Educational
- Resources

EnviroNet Facilities Monitoring System

GET THE BIG PICTURE...

and all of the details too! Bridge the gap between IT and facilities. Keep in touch and in control with Environet.

POWERFUL

Environet graphically details your mission critical environment, from an enterprise wide view to the smallest component within it. With Environet, you can identify problems before they become catastrophic.

RELIABLE

Remotely manage and view alarms from all your facilities. Using Environet's drill-down feature, you can acknowledge, silence, or make notes on alarm conditions.

CUSTOMIZABLE

Use Environet to view thermographic conditions, equipment status and much more. Get the most out of Environet by customizing features to track data that is most essential to your facility's operations.

COMPREHENSIVE

Whether you have a single location or multiple locations around the globe, Environet lets you monitor all your mission critical components from anywhere. With Environet you can check the status of any location remotely with a variety of web-based devices.

HIGHLIGHTS

Geist customizes Environet to your requirements, so you'll have the most cost-effective, high-quality software solution available. And with Environet at work, you can identify problems before they escalate through timely notification of key individuals.

- Customized Systems
- Floor Plans with Dynamic Links
- Monitoring of Standard Communication Protocols: SNMP, BACnet, Modbus, LON, Hardwired I/O
- User-defined Alarm Thresholds
- Customizable Reporting Capabilities
- External Notifications for Alarms
- Multi-user Based Permissions
- Views: Global, Dashboard, Thermographic, Equipment, Leak Detection, and more...
- Power Capacity Planning
- Energy Cost Analysis
- Maintenance Scheduling and Reminders

Basic & Metered

Monitored

Switched

Satellite

Environmental

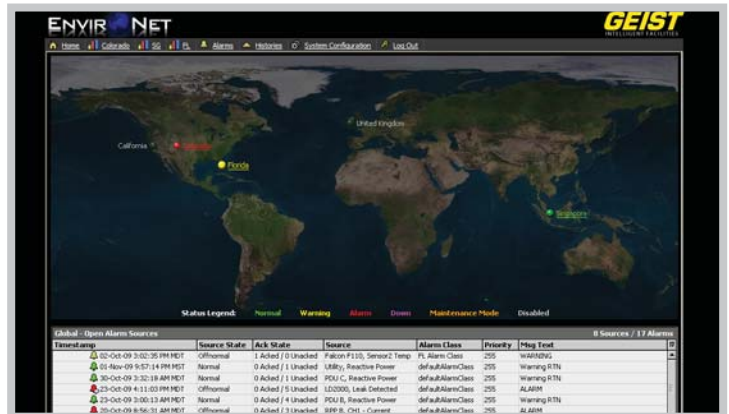
Software

Accessories

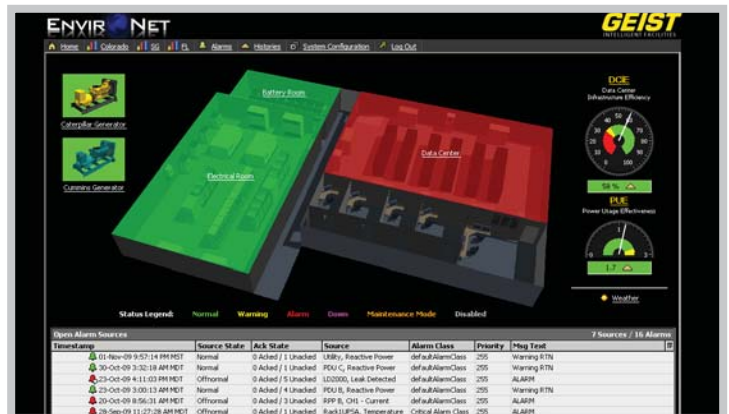
Brackets

Educational

Resources



GLOBAL VIEW



FACILITY VIEW



CUSTOMIZED DATA CENTER FLOOR VIEW



EnviroNet Facilities Monitoring System



REMOTE POWER PANEL VIEW

